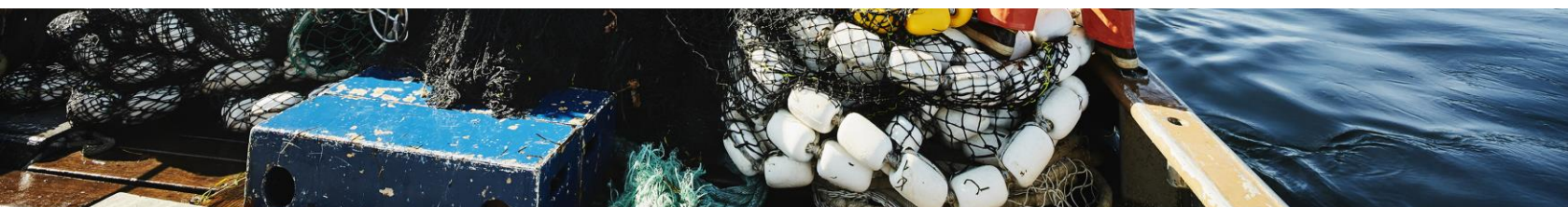




2022/2023 Catalogue



HD200 Quinault Rain Suit

For our Quinault 2-piece Rain Suit, we combined our popular HD201 Jacket and HD202 Bib to make the best full body covering raingear available.

Additional Features:

- Woven polyester fabric, that is infused & Coated w/PVC n All seams sewn and welded
- 3-piece hood with brim
- Heavy duty plastic snaps
- Low back and adjustable shoulder straps
- Adjustable side snaps at waist
- Colors: Yellow, Forest
- Sizes & Prices: S-XL MSRP: \$92.00,
- 2XL-3XL MSRP: \$96.00



HD201 Quinault Rain Jacket

This Construction Grade Jacket is from our popular HD200 Rain Suit. This popular multi-function jacket is perfect for many outdoor uses, from walking the dog, gardening, to a rainy soccer or football game. This jacket can take the weather.

Additional Features:

- Woven polyester fabric with PVC coating
- All seams sewn and welded
- Hip length jacket with open bottom and cuff
- 3-piece hood with brim
- Heavy duty plastic snap closure w/storm flap
- Colors: Yellow, Forest, Sea Blue
- Sizes & Prices: S-XL MSRP: \$50.00, 2XL-3XL MSRP: \$54.00; 4XL-6XL MSRP: \$58.00
 - (NOTE: sizes 4XL-6XL Available in Sea Blue Only)

HD202 Quinault Rain Bib

Featured in our HD200 Rain Suit, this bib is great for the gardener too.

Additional Features:

- Woven polyester fabric with PVC coating
- Low back with adjustable shoulder straps
- Full cut front panel
- All seams sewn and welded
- Adjustable side snaps at waist
- Colors: Yellow, Forest, Sea Blue
- Sizes & Prices:
 - S-XL MSRP: \$50.00; 2XL-3XL MSRP: \$54.00; 4XL-6XL MSRP: \$58.00
 - (NOTE: sizes 4XL-6XL Available in Sea Blue Only)



HD225 Quinault ¾ Length Rain Jacket

This is longer than the HD201 Jacket, made from the same fabric but for the user who is looking for more features for a different end use.

Additional Features:

- Heavy duty two-way #10 zipper with snap overflap
- Two large outside pockets w/fold over flaps and snaps
- Ragland shoulder sleeves w/cuff inserts, elastic closure
- Mid-thigh length with open bottom
- All seams sewn and welded
- Woven polyester fabric with PVC coating
- Color: Forest
- Sizes & Prices: S-XL MSRP: \$80.00, 2XL-3XL MSRP: \$84.00



HD229 Sou'Wester Rainhat

For those who don't like or can't wear hoods or have a rain jacket without a hood...this is from the original design that is worn around the world.

Additional Features:

- Woven polyester fabric with PVC coating
- All seams sewn and welded
- Six wedge construction w/ elongated rear brim
- Soft poly-cotton lining and ear flaps
- Colors: Yellow, Forest
- Sizes: S-XL
- MSRP: \$30.00



HD223 Long Coat

This is similar to the HD225, but a little longer. The fabric is a "smidge" lighter to make up for the length. It doesn't have a zipper, but it does have the same snap and weather baffle system as our HD201. Worn by dairy farmers and soccer moms up and down the coast. Color: Forest

- Sizes & Prices: S-XL MSRP: \$84.00 2XL-3XL MSRP: \$86.00

HD861 Willapa HD Rain Jacket

If your job takes you right up against the rusty rail or around jagged concrete of rebar and the weather is not your friend, this rain gear will give you the durability and the protection you need while getting the job done.

- Additional Features:
- Multi-layered PVC bonded to heavy duty PVC coated cotton-poly material
- Fatigue reducing “Bat Wing” shoulder design n Double layer cuff w/Neoprene sleeve inserts
- All seams sewn and welded
- Rivet reinforced at strength points
- 3-piece hood with brim
- Double storm flap
- Heavy duty non-corrosive metal snap closures
- Colors: Dark Forest, Burnt Orange
- Sizes & Prices: S-XL MSRP: \$142.00, 2XL-3XL MSRP: \$148.00



HD862 Willapa HD Bib

- Multi-layered PVC bonded to heavy duty PVC coated cotton-poly material
- Large mesh pockets on the inside of the upper bib
- Double layered cuff w/Neoprene
- All seams sewn & welded
- Rivet reinforced at strength points
- Full cut w/adjustable snap closures
- Colors: Dark Forest, Burnt Orange
- Sizes & Prices: S-XL MSRP: \$142.00, 2XL-3XL MSRP: \$148.00



DT951 Winslow Rain Jacket
(with DUTCHtech)

The soft “quiet” comfortable feel of “DUTCHtech” is like no other raingear fabric.

- Additional Features:
- All seams sewn and welded
- 3-piece hood with brim
- 2 front zippered pockets w/hook & loop flap closures
- Hip length, full vented back
- Reflective piping on hood brim
- Color: Blue/Grey (only)
- Sizes: S-2XL MSRP: \$130.00



DT969 Winslow Rain Pant
(with DUTCHtech)

- For those who simply prefer a waist pant over a bib.
- Additional Features:
- Elastic waist with draw cord
- Two front pockets, one back
- 10” leg zipper with snap closure
- Colors: Black
- Sizes: S-2XL MSRP: \$76.00



4510T

- Grip-Fast Work Glove Grip-Fast Thermal Insulated work glove constructed with heavyweight poly/cotton insulation with a durable latex coating over the fingers & palm for a sure grip.
- Color: Neon Green/Brown
- Sizes: 7(S), 8(M), 9(L),10(XL)
- MSRP: \$8.00



3000T

- Power Grab Work Glove The lightweight (non-insulated) cousin of our 4510T. This lighter weight glove is perfect for general projects.
- Color: Natural/Blue
- Sizes: 7(S), 8(M), 9(L),10(XL)
- MSRP: \$6.50



WA930

- Ragg Wool Full-Fingered Gloves
- 85% Wool, 15% Polyester
- Colors: Oatmeal, Hunter Green
- Sizes: OSFM
- MSRP: \$15.50



WA931

- Ragg Wool Fingerless Gloves
- 85% Wool, 15% Polyester
- Colors: Oatmeal, Hunter Green
- Sizes: OSFM
- MSRP: \$15.50



HD862EPT Men's PVC Knee Boot

- Men's PVC Knee Boot With classic style and coloring these rubber boots meet the demands of the multipurpose boot.
- Color: Black
- Sizes: 5-14
- MSRP: \$27.50



Typhoon rough weather jacket & pants are specially designed to brave the elements. Durable 100% Waterproof/ breathable 8000mm heavyweight polyester oxford fabric with fully taped & sealed seams keeps you warm and dry during the most difficult tasks!

TY601 Typhoon Rain Jacket

- Zip & Velcro double protective front placket
- Stand-up collar is stylish while protecting face in harsh winds
- Convertible hood is lined for warmth and has brim and pull closures
- Adjustable Velcro strap on wrists
- Inner Neoprene cuff
- 2 side-seam zippered pockets
- Colors: Black, Neon Green, Ice Blue
- Sizes & Prices: S-XL MSRP: \$96.00, 2XL-3XL MSRP: \$100.00



TY669 Typhoon Rain Pant

- Includes a belt, cargo side pocket, zippered bottom with Velcro closure to fit over boots!
- Color: Black
- Sizes & Prices: S-XL MSRP: \$64.00, 2XL-3XL MSRP: \$68.00

FR201 MAXflect Rain Jacket

FR201 MAXflect Rain Jacket

Now in the new MAXflect Neon Green for added visibility!

This hi-visibility jacket is Class III approved (ANSI/SEA 107-2004) and also has the added benefit of 3M™ 2" silver Scotchlite™ Reflective Material for even greater visibility

- Additional Features: High Visibility MAXflect Neon Green color
- Class III approved (ANSI/SEA 107-2004)
- 2" Silver 3M™ Scotchlite Reflective Material
- Waterproof Polyester w/interior polyurethane coating
- Two outside pockets w/ hook & loop flap closure
- Caped back with vents
- Recessed wrist gussets
- Double stitched seams
- Clear ID tag holder
- Hood folds under collar
- Weather flap w/ non-corrosive snaps
- Color: Neon Green
- Sizes & Prices: S-XL MSRP: \$108.00, 2XL-4XL MSRP: \$118.00



FR202 MAXflect Bib

MAXFlect Neon Green has also been added to the bib for even greater visibility! Constructed with 3M™ 2" silver Scotchlite Reflective Material, this bib is perfect for the job site, where visibility is important.

- Additional Features:
- High visibility MAXFlect Neon Green color
- Class III approved (ANSI/SEA107-2004)
- High cut side & back w/adjustable shoulder straps
- Front fly
- Side pocket w/heavy duty hook and loop closure
- Waterproof Polyester w/interior polyurethane coating. Color: Neon Green
- Sizes & Prices: S-XL MSRP: \$92.00, 2XL-4XL MSRP: \$96.00



FR209 MAXflect Rain Pant

This extra rugged rain pant is now made with MAXFlect Neon Green for added visibility along with the 3M™ 2" silver Scotchlite Reflective Material, creating a great hi-visibility rain pant.

- Additional Features: High visibility MAXFlect Neon Green color
- Class III approved (ANSI/SEA 107-2004)
- Waterproof nylon with/interior polyurethane coating
- Side pocket with heavy duty hook and loop closure
- 2" silver 3M™ Scotchlite Reflective Material
- Color: Neon Green
- Sizes & Prices: S-XL MSRP: \$94.00, 2XL-3XL MSRP: \$96.00





DF301 Full Zipper Jacket

- 100% polyester storm finish
- Bonded with 300gsm printed micro fleece lined
- Colors: Chocolate, Navy
- Sizes: M-2XL
- MSRP: \$80.00



DF303 Full Zipper Vest

- 100% polyester storm finish
- Bonded with 300gsm printed micro fleece lined
- Colors: Chocolate, Navy
- Sizes: M-2XL
- MSRP: \$70.00



MJS201 Full Zippered Hooded Shirt Jacket

- Relaxed Fit
- Hooded
- Lower side seam pockets
- Two chest pockets
- Diamond Quilted
- Front zipper with snap closure
- Shell: 10oz Duck, 100% Cotton
- Lining: 100% Polyester
- Color:
 - Dark Navy, Black, Duck Brown, Charcoal
- Case Packs
 - 12 units per case, packed by color
 - 2/M, 4/L, 4/XL, 2/2XL
- Sizes: M-2XL
- MSRP: \$75.00





LS350 Men's Full Zipper Hooded Jacket

- Quilted body hoody with sweatshirt sleeves and lining to make for a warm, stylish fan statement!
- Quilted Body
- Grey Sleeves
- Contrasting front zipper
- Two sided zippered pockets
- Material:
 - Body: 100% Nylon insulated with 100% polyester fill
 - Back: Fleece (60% cotton, 40% polyester)
- Colors: Navy/Green, Black/Grey
- Case Pack: 4/M, 8/L, 8/XL, 4/2X
- MSRP: \$50.00



Dutch Harbor Gear 206-244-2600

LH 100 Full Zip Jacket

- Warm comfortable top.
- One side zippered pocket
- Grey contrasting side panels and sleeves
- Two side zippered pockets
- Fabric: Body is 100% Nylon insulated with 100% Polyester fill. Side panels 94% polyester, 6% Spandex
- Case Pack: 4/M, 8/L, 8/XL, 4/2X Colors: Navy/Grey
- MSRP: \$50.00



SW300 Astoria Full Zipper Hoodie

This is the BULLDOZER of the sweatshirt world! Designed with working men in mind, These sweatshirts feature a full cut and are constructed with a warm 500 GSM Super Heavyweight cotton polyester shell and comfortable 180GSM Heavyweight polyester/cotton waffle weave interior body insulation. With full arm movement and comfort in mind, we have equipped the sleeves with a smooth quilted lining with polyester batten. With its classic styling and a variety of colors from which to choose, make the Astoria an excellent value for staying warm while working outside in the chill of the fall or the biting cold of winter.

- Additional Features:
- Double thick hood with draw cord
- Two front pockets
- Full length #10 brass zipper
- 80/20% cotton/polyester shell
- 65/35% polyester waffle weave lining
- Quilted sleeve lining
- Colors: Navy, Heather Grey
- Sizes & Prices: M-XL MSRP: \$73.00, 2XL-3XL MSRP: \$80.00





HF301 Men's Heavy-Duty Lined Buffalo Plaid

Product Description

- With double fleece layers, this one is really warm!
- Full front zipper
- Two chest pockets with button closure
- Two open lower hand pockets
- Open cuff, button closure
- Material:
 - Shell: 100% 280GM/M2
 - Lining: 100% 220GM/M2
 - Sleeves: 190T Polyester Taffeta
- Colors: Red/Black, Royal Blue/Black
- Sizes & Prices: M-2XL MSRP: \$80.00



HF301SPL Men's Heavy-Duty Unlined Buffalo Plaid

- Same great features as our popular HF-301 but unlined. This mid-weight jacket is perfect for milder weather. Shell is 100% 280GM/M2.
- Additional Features: Full front zipper
- Two chest pockets with button closure
- Two open lower hand pockets
- Open cuff, button closure
- Colors: Red/Black, Royal Blue/Black
- Sizes: M-2XL MSRP: \$60.00



DH 200 Fleece Lined Beanie

Product Description

- 100% Acrylic with 100% microfleece lining
- Colors: Black, Brown, Neon, Ocean Blue, Navy, Orange
- Sizes & Prices: OSFA; MSRP: \$16.99



22272G

- Xtratuf 15" Plain Toe Boot
- Sizes: 3-15
- MSRP: \$142.50



22274G

- Xtratuf 15" Insulated Plain Toe Boot
- Sizes: 6-14
- MSRP: \$162.50

22271G

- Xtratuf 15" Steel Toe Boot
- Sizes: 5-14
- MSRP: \$152.50



22273G

- Xtratuf 15" Insulated Steel Toe Boot
- Sizes: 6-15
- MSRP: \$172.50

XTRATUF®

XWL-1SD

- Xtratuf Salmon Sisters 15" Boot
- Sand Dollar Print
- Sizes: 6-11
- MSRP: \$150.00



XWLM-001

- 12" Legacy Boot
- Sizes: 6-11
- MSRP: \$145.00



22680G

- Xtratuf Kid's Legacy 8"
- Sizes: Y1-4
- MSRP: \$60.00



22681G

- Xtratuf Kid's Legacy 8"
- Sizes: C5-13
- MSRP: \$55.00



XTRATUF®

Dutch Harbor Gear 206-244-2600

22733



22735



XTRATUF MEN'S 6" ANKLE DECK BOOT

- Recommend half sizes order up
- 100% Waterproof
- Slip-Resistant Chevron Outsole
- XPRESSCOOL Liner
- Front and Rear Pull-On Tabs
- Shaft Circumference is 12.6 inches
- Toe Box Height 1.19 inches
- Approximately 3.16lbs
- Measurements were taken from a men's size 9.
- Expect slight variations based on size
- Sizes: 7-13
- MSRP: \$100.00

22734



22736



XTRATUF®

Dutch Harbor Gear 206-244-2600

XWAB-201



XTRATUF WOMEN'S 6" ANKLE DECK BOOT

- Recommend half sizes order up
- 100% Waterproof
- XPRESSCOOL® Liner
- Pull-On Tabs
- Slip-Resistant Chevron Outsole
- Toe Box Height 1.13 inches
- Shaft Circumference 11.69 inches
- Approximately 3.16lbs
- Measurements were taken from a size 7. There may be slight variations based on size.
- Sizes: 5-11
- MSRP: \$100.00

XWAB-900



XWAB-3BG



XTRATUF®

XWAB-2BM

XTRATUF WOMEN'S 6" ANKLE PRINT DECK BOOT

XWAB-3BB



- Recommend half sizes order up
- 100% Waterproof
- Slip-Resistant Chevron Outsole
- XPRESSCOOL Liner
- Front and Rear Pull-On Tabs
- Shaft Circumference is 12.6 inches
- Toe Box Height 1.19 inches
- Approximately 3.16lbs
- Measurements were taken from a men's size 9.
- Expect slight variations based on size
- Sizes: 7-13
- MSRP: \$110.00



XTRATUF®



1087 Andover Park East Seattle, WA 98188

800.426.9867—Toll Free

206.244.2600—Local

206.244.3436—Fax

Email Questions to: info@dutchharborgear.com